



RECP #: 752675

RECORDED 5/8/2019 AT 1:11 PM BK# 2620 PG# 1717
Debra K. Lee, CLERK OF LARAMIE COUNTY, WY PAGE 1 OF 1

STATE OF WYOMING CORNER RECORD

(In compliance with the CORNER PERPETUATION AND FILING ACT, Wyoming Statutes, 1997 Section 33-29-140, et. seq., and the Rules and Regulations of the Board of Registrations for Professional Engineers and Professional Land Surveyors)

EAST QUARTER CORNER SECTION 4, T. 18 N., R. 61 W., 6TH P.M., LARAMIE COUNTY, WYOMING

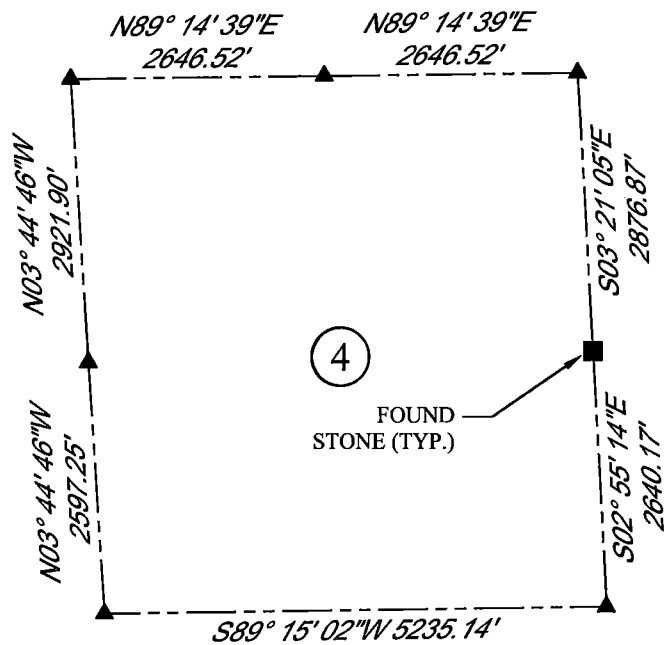
GLO: SET A SANDSTONE 19X9X5, 12 INS. DEEP MARKED 1/4 ON W. SIDE FOR 1/4 SEC. COR.

FOUND: LOOSE STONE NEAR FENCE CORNER. FOUND 1/4 MARKED ON SIDE FACING DOWN. STONE MEASURES 13X17X5.

SET: NOTHING

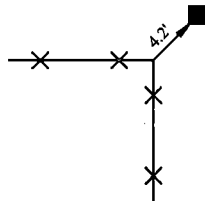
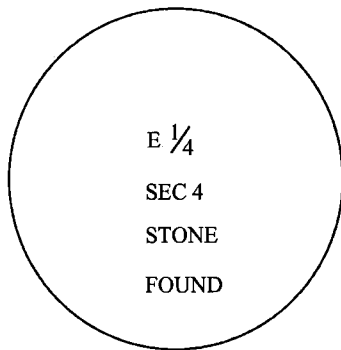


SCALE: NONE
NORTH DETERMINED BY
G.P.S OBSERVATIONS



4

FOUND
STONE (TYP.)



LEGEND:

- FOUND BLM CAP
- FOUND USFS CAP
- FOUND STONE
- FOUND PRIVATE MONUMENT
- ◆ CALCULATED POSITION
- ▲ SET MONUMENT (LS10245)
- SECTION LINE

DATE OF FIELD WORK: 07/19/2018 OFFICE REFERENCE: MERIDEN

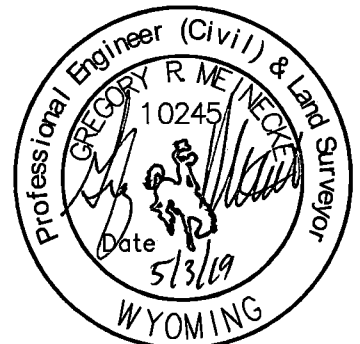
CROSS INDEX DIAGRAM

	1	2	3	4	5	6	7	8	9	10	11	12	13	14	15	16	17	18	19	20	21	22	23	24	25
A																									
B																									
C			6		5		4		●	3		2		1											
D																									
E																									
F																									
G			7		8		9		10		11		12												
H																									
J																									
K																									
L			18		17		16		15		14		13												
M																									
N																									
O																									
P			19		20		21		22		23		24												
Q																									
R																									
S																									
T			30		29		28		27		26		25												
U																									
V																									
W																									
X			31		32		33		34		35		36												
Y																									
Z																									
	1	2	3	4	5	6	7	8	9	10	11	12	13	14	15	16	17	18	19	20	21	22	23	24	25

WOOD
2615 AVIATION DRIVE
SHERIDAN, WY 82801
PH: 307-675-6400

THIS CORNER RECORD WAS
PREPARED BY ME OR UNDER
MY DIRECTION AND
SUPERVISION,
SEAL AND SIGNATURE

wood.



CORNER NAME: EAST QUARTER
SBRPELS/PLSW: MARCH 1994; PLSW JANUARY 1998

SECTION: 4

T. 18N.,

R. 61 W.

; 6TH P.M. CROSS-INDEX #

C-13